

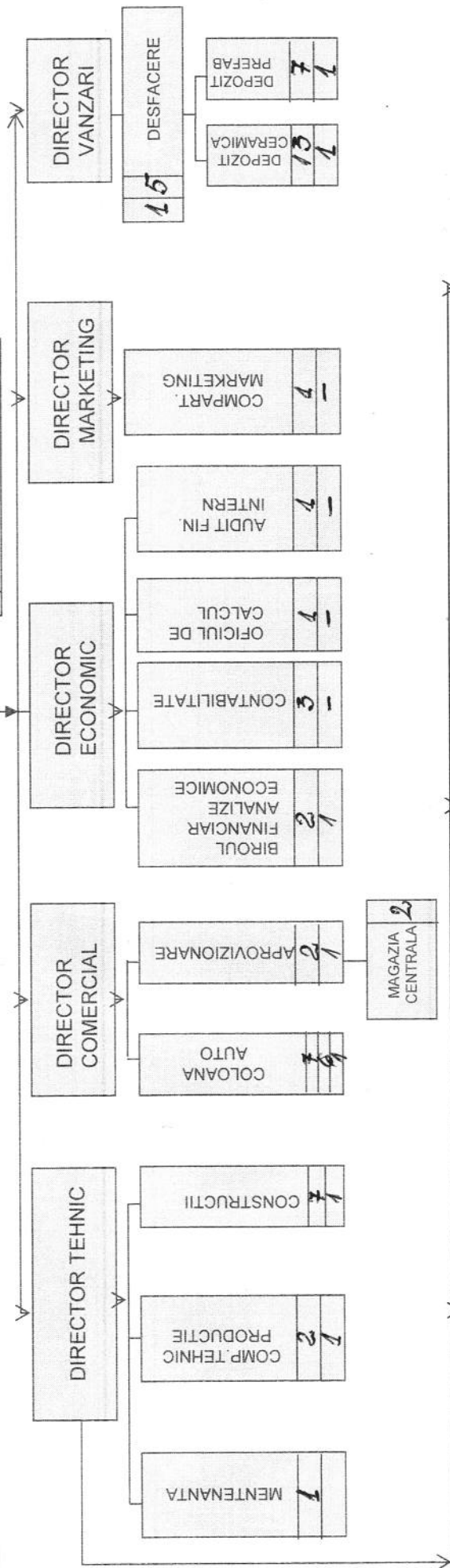
ORGANIGRAMA SOCIETATII S.C. MACOFIL S.A. TG-JIU

1	18	RESURSE UMANE, SALARIZARE, ADMINISTRATIV, SECRETARIAT, PAZA AP. CIVILA	
	1	OFICIUL JURIDIC	
	1	MANAGEMENTUL CALITATII	
	1	R.S.V.T.I.	
1	6	7	INSPECTII TESTE LABORATOR

ADUNAREA GENERALA A ACTIONARILOR	
CONSILIUL DE ADMINISTRATIE	
AUDITOR FINANC. EXTERN	
DIRECTOR GENERAL	

TOTAL PERSONAL	din care		
	Muncitori	Conducatori Formatii de Lucru	Personal T.E.S.A.
280	238	17	25

Legenda:
 1. TOTAL PERSONAL din care:
 2. MUNCITORI
 3. CONDUCATORI FORMATII
 4. SEFI BIROURI, SECTII COMPARTIMENTE, ETC.



SECTIA PRODUSE CERAMICE	80	72	7	1
PREPARARE	3			
CARAMIDA A	16	15	1	
CARAMIDA B	16	18	1	
CAMERA DE COCATORI	5			
CAMERA DE COMANDA	5			
CAMERA COMANDA	5			
LINE NOUA	35			

SECTIA MECANO ENERGETICA	38	34	3	1
AT MEC. CONF. MET.	17	16	1	
AT. MEC. PRELUCR.	1			
ATELIER ELECTR.	9	8	1	
ATELIER BOBINAJ	9	8	1	
ATELIER REPARATII AUTO	2	1	1	
ATELIER REPARATII	1	1	1	
BALAST RACHITI	10	9	1	

SECTIA PREFABRICATE DIN BETON	69	65	3	1
PREFABRICATE	54	52	2	
TUBURI PREMO	2			
PAVELE	8	1		
CENTRALA BETON	5	1		